



THANK YOU FOR PURCHASING YOUR SECURITY MESH METAL CABINET.

Please carefully read and follow these instructions to assemble your cabinet.

ENSURE PROTECTIVE EYEWEAR AND GLOVES ARE WORN WHEN ASSEMBLING THIS UNIT.

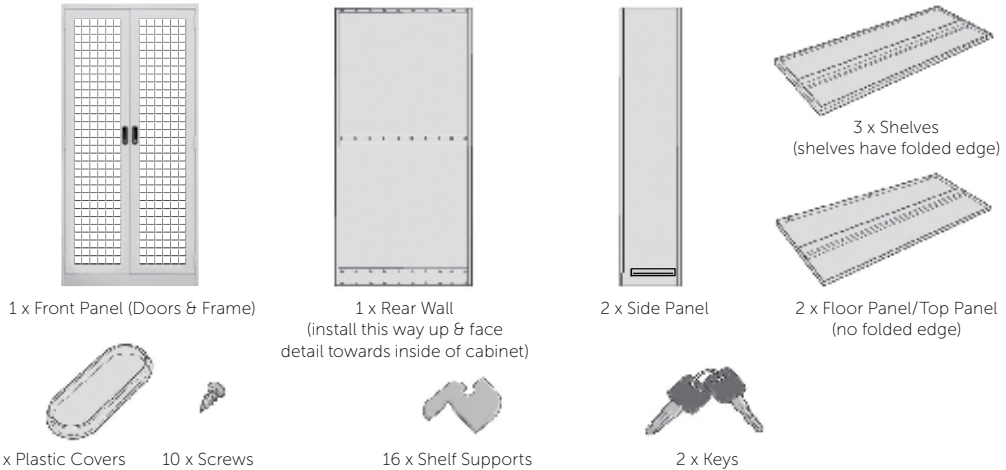
WARNING: SERIOUS INJURY CAN BE CAUSED BY TOPPLING FURNITURE. To help prevent tip-over, we recommend you anchor this product to a wall or other suitable surface. Check anchors regularly.

Step 1

CHECK PARTS LIST

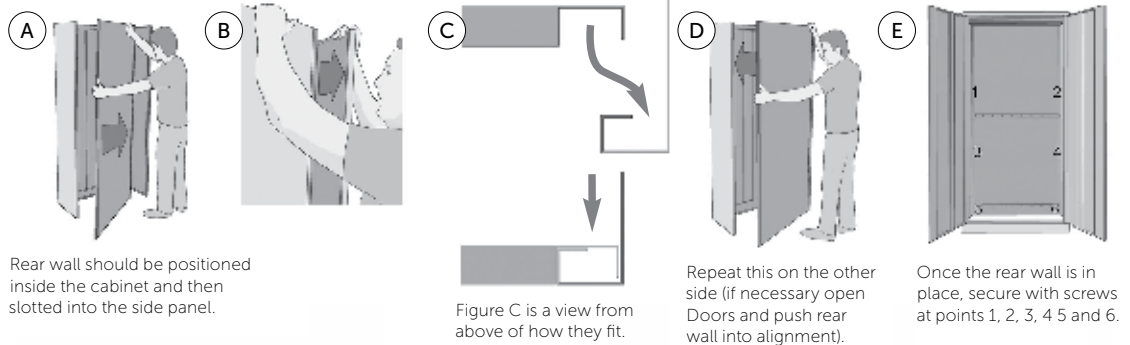
TOOLS REQUIRED:

- Phillips Head Screwdriver



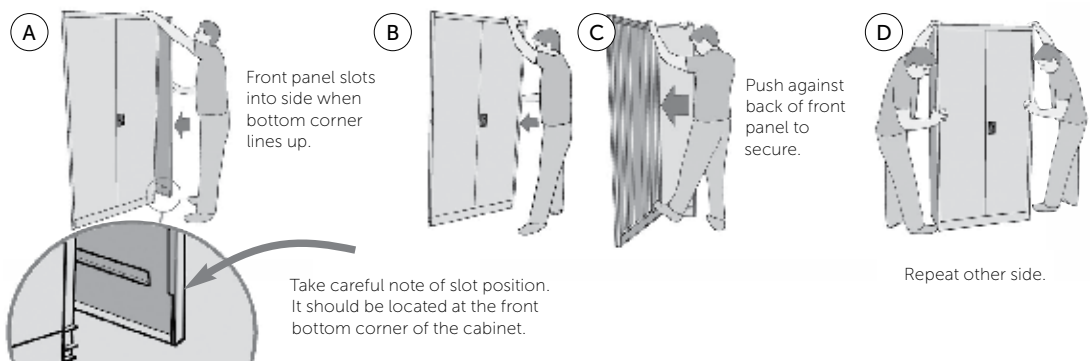
Step 2

FITTING AND SECURING REAR WALL TO SIDES



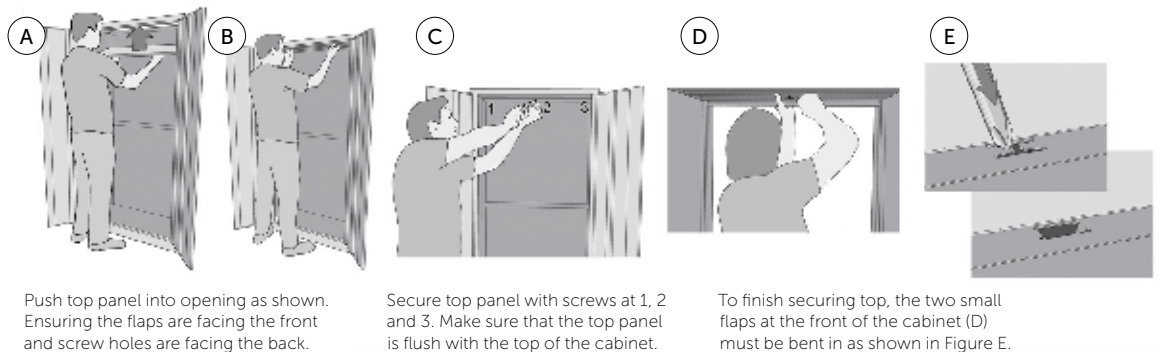
Step 3

FITTING FRONT PANEL TO SIDE PANELS



Step 4

FITTING AND SECURING TOP PANEL

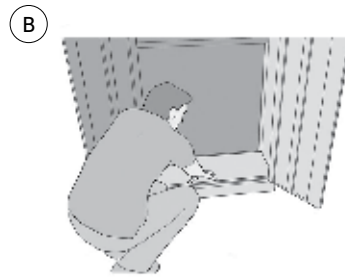
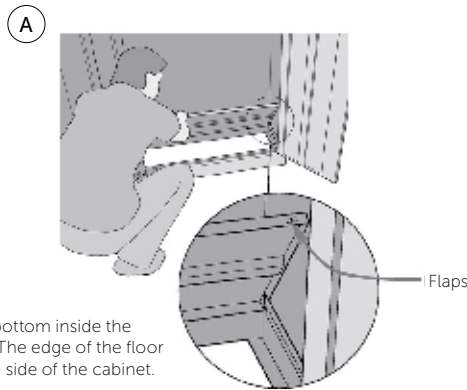


Step 5

FITTING FLOOR PANEL

PLEASE NOTE: Make sure you are using a floor panel, not a shelf part. Also check folding flaps are located towards front of the cabinet.

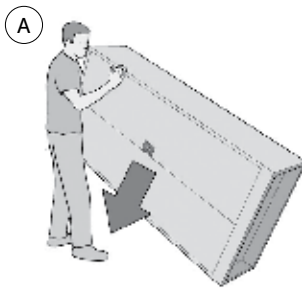
The floor panel is fitted at the bottom inside the cabinet, as shown in Figure A. The edge of the floor panel slots into grooves on the side of the cabinet.



The floor panel should sit neatly in the bottom of the cabinet.

Step 6

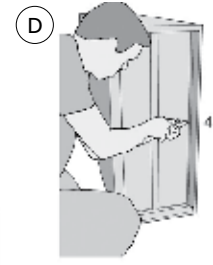
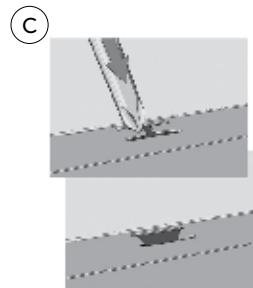
SECURING THE BASE



To secure the cabinet, it needs to be placed on its side in order to allow access to the base.



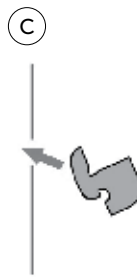
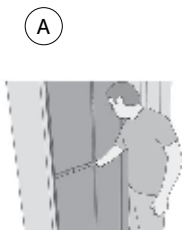
Fold in the three flaps (1,2 and 3) as shown in Figures B and C.



Then secure the base and rear wall with screw as shown at point 4.

Step 7

FITTING THE SHELVES

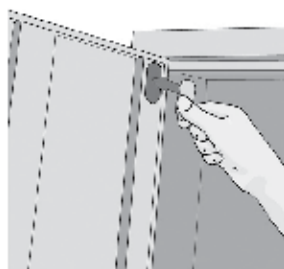


To fit a shelf, four shelf supports need to be placed at equal heights around the inside of the cabinet (Figure A and B). The shelf supports fit in as shown in Figure C, D and E.

Place shelves on pre-positioned shelf supports.

Step 8

PRESS IN PLASTIC COVER



Finished size: 1850mm high x 900mm wide x 450mm deep

